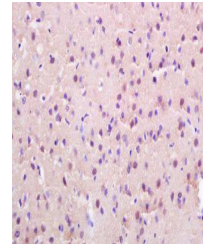


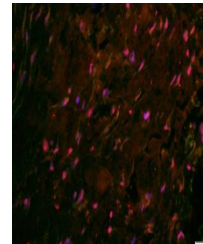
Product Datasheet

HER3 (phospho-Tyr1289) antibody (orb5850)

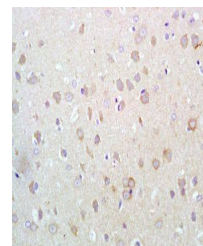
Description	HER3 (phospho-Tyr1289) antibody
Species/Host	Rabbit
Reactivity	Human, Mouse, Rat
Conjugation	Unconjugated
Tested Applications	IHC-P
Immunogen	KLH conjugated Synthesised phosphopeptide derived from human HER3 around the phosphorylation site of Tyr1289 (QG(p-Y)EE)
Target	Phospho-ERBB3 (Tyr1289)
Preservatives	0.01M TBS(pH7.4) with 1% rAlbumin, 0.03% Proclin300 and 50% Glycerol.
Form/Appearance	Liquid
Concentration	1mg/ml
Storage	Shipped at 4°C. Store at -20 °C for one year. Avoid repeated freeze/thaw cycles.
Note	For research use only
Isotype	IgG
Clonality	Polyclonal
MW	148 kDa
CAS Number	3
Uniprot ID	P21860
Dilution Range	IHC-P=1:100-500, WB=1:500-2000, IHC-F=1:100-500, IF=1:100-500, ELISA=1:5000-10000
Expiration Date	12 months from date of receipt.



Immunohistochemical staining of rat brai...



Immunohistochemical staining of human re...



Immunohistochemical staining of rat brai...