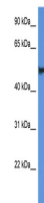


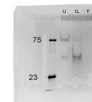
Product Datasheet

CLU antibody (orb584908)

Description	Rabbit polyclonal antibody to CLU
Species/Host	Rabbit
Reactivity	Equine, Human
Conjugation	Unconjugated
Tested Applications	IHC, WB
Immunogen	The immunogen is a synthetic peptide directed towards the C terminal region of human CLU
Target	CLU
Preservatives	Liquid. Purified antibody supplied in 1x PBS buffer with 0.09% (w/v) sodium azide and 2% sucrose.
Form/Appearance	Liquid. Purified antibody supplied in 1x PBS buffer with 0.09% (w/v) sodium azide and 2% sucrose.
Concentration	0.5 mg/ml
Storage	Maintain refrigerated at 2-8°C for up to 2 weeks. For long term storage store at -20°C in small aliquots to prevent freeze-thaw cycles.
Note	For research use only
Protein Sequence	Synthetic peptide located within the following region: CREILSVDCSTNNPSQAKLRRELDLQVAERLTRKYNELLKSYQWKMLN
Clonality	Polyclonal
MW	58kDa
Uniprot ID	P10909
NCBI	NP_001822
Expiration Date	12 months from date of receipt.

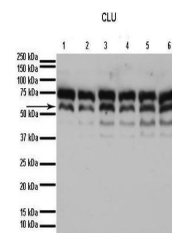


CLU antibody - C-terminal region (orb584...



Legend
U = Untreated equine cartilage
L = LPS treated equine cartilage
T = TNF-α + LPS treated equine cartilage

equine cartilage explants.



Lanes: 1. 40 ug human HK2 cell (kidney p...