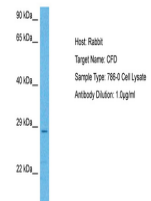


Product Datasheet

CFD antibody (orb584602)

Description	Rabbit polyclonal antibody to CFD
Species/Host	Rabbit
Reactivity	Human
Conjugation	Unconjugated
Tested Applications	WB
Immunogen	The immunogen is a synthetic peptide directed towards the C terminal region of human CFD
Target	CFD
Preservatives	Liquid. Purified antibody supplied in 1x PBS buffer with 0.09% (w/v) sodium azide and 2% sucrose.
Form/Appearance	Liquid. Purified antibody supplied in 1x PBS buffer with 0.09% (w/v) sodium azide and 2% sucrose.
Concentration	0.5 mg/ml
Storage	Maintain refrigerated at 2-8°C for up to 2 weeks. For long term storage store at -20°C in small aliquots to prevent freeze-thaw cycles.
Note	For research use only
Protein Sequence	Synthetic peptide located within the following region: GRRPDSLQHVLLPVLDTRATCNRRRTHHDGAIATERLMCAESNRRDSCCKGDSG
Clonality	Polyclonal
MW	27kDa
Uniprot ID	P00746
NCBI	NP_001919
Expiration Date	12 months from date of receipt.

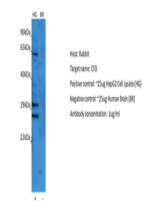


Host: Rabbit,
Target Name:
CFD, Sample
T...

CFD



Host: Rabbit,
Target Name:
CFD, Sample
T...



Host: Rabbit,
Target: CFD,
Positive cont...