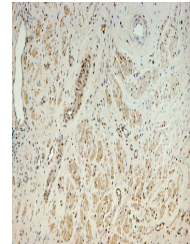


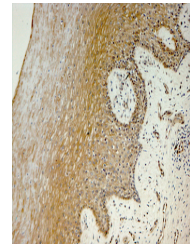
Product Datasheet

AKR1C1 antibody (orb584599)

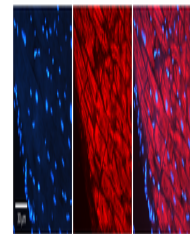
Description	Rabbit polyclonal antibody to AKR1C1
Species/Host	Rabbit
Reactivity	Human, Monkey
Conjugation	Unconjugated
Tested Applications	IHC, WB
Immunogen	The immunogen is a synthetic peptide directed towards the N terminal region of human AKR1C1
Target	AKR1C1
Preservatives	Liquid. Purified antibody supplied in 1x PBS buffer with 0.09% (w/v) sodium azide and 2% sucrose.
Form/Appearance	Liquid. Purified antibody supplied in 1x PBS buffer with 0.09% (w/v) sodium azide and 2% sucrose.
Concentration	0.5 mg/ml
Storage	Maintain refrigerated at 2-8°C for up to 2 weeks. For long term storage store at -20°C in small aliquots to prevent freeze-thaw cycles.
Note	For research use only
Protein Sequence	Synthetic peptide located within the following region: DSAHLYNNEEQVGLAIRSKIADGSVKREDIFYTSKLWCNSHRPELVRPAL
Clonality	Polyclonal
MW	36kDa
Uniprot ID	Q04828
NCBI	NP_001344
Expiration Date	12 months from date of receipt.



Monkey adrenal gland



Monkey vagina gland



Rabbit Anti-AKR1C1 Antibody, Catalog Num...