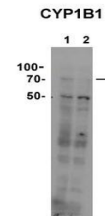


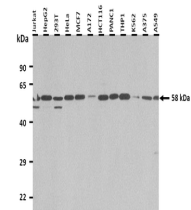
Product Datasheet

CYP11B1 antibody (orb584585)

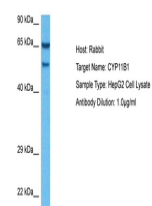
Description	Rabbit polyclonal antibody to CYP11B1
Species/Host	Rabbit
Reactivity	Human, Monkey
Conjugation	Unconjugated
Tested Applications	IHC, WB
Immunogen	The immunogen is a synthetic peptide directed towards the C terminal region of human CYP11B1
Target	CYP11B1
Preservatives	Liquid. Purified antibody supplied in 1x PBS buffer with 0.09% (w/v) sodium azide and 2% sucrose.
Form/Appearance	Liquid. Purified antibody supplied in 1x PBS buffer with 0.09% (w/v) sodium azide and 2% sucrose.
Concentration	0.5 mg/ml
Storage	Maintain refrigerated at 2-8°C for up to 2 weeks. For long term storage store at -20°C in small aliquots to prevent freeze-thaw cycles.
Note	For research use only
Protein Sequence	Synthetic peptide located within the following region: ARNPNVQQALRQESLAAAASISEHPQKATTELPLLRALAKETLRLYPVGL
Clonality	Polyclonal
MW	58 kDa
Uniprot ID	P15538
NCBI	NP_000488
Expiration Date	12 months from date of receipt.



Sample type: 1.
HEK293TN-GFP-hcyp11B1 (7...



25 ug of the indicated
Human whole cell ...



Host: Rabbit,
Target Name:
CYP11B1,
Samp...