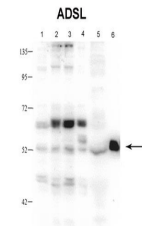


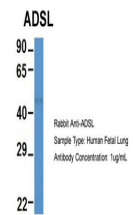
Product Datasheet

ADSL antibody (orb584531)

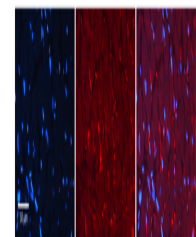
Description	Rabbit polyclonal antibody to ADSL
Species/Host	Rabbit
Reactivity	Human
Conjugation	Unconjugated
Tested Applications	IHC, WB
Immunogen	The immunogen is a synthetic peptide directed towards the middle region of human ADSL
Target	ADSL
Preservatives	Liquid. Purified antibody supplied in 1x PBS buffer with 0.09% (w/v) sodium azide and 2% sucrose.
Form/Appearance	Liquid. Purified antibody supplied in 1x PBS buffer with 0.09% (w/v) sodium azide and 2% sucrose.
Concentration	0.5 mg/ml
Storage	Maintain refrigerated at 2-8°C for up to 2 weeks. For long term storage store at -20°C in small aliquots to prevent freeze-thaw cycles.
Note	For research use only
Protein Sequence	Synthetic peptide located within the following region: RVRDDLRFGRGKGGTTGTQASFLQLFEGDDHKVEQLDKMVTAKAGFKRAFI
Clonality	Polyclonal
MW	55kDa
Uniprot ID	P30566
NCBI	NP_000017
Expiration Date	12 months from date of receipt.



Sample Type: 1. Hamster CHO K1 cells (20...



Host: Rabbit, Target Name: ADSL, Sample ...



Rabbit Anti-ADSL Antibody, Catalog Numbe...