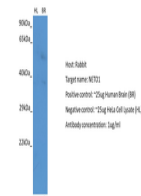


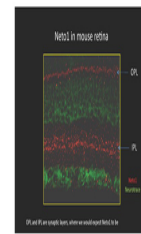
Product Datasheet

NETO1 antibody (orb584466)

Description	Rabbit polyclonal antibody to NETO1
Species/Host	Rabbit
Reactivity	Human, Mouse
Conjugation	Unconjugated
Tested Applications	IHC, WB
Immunogen	The immunogen is a synthetic peptide directed towards the C terminal region of human NETO1
Target	NETO1
Preservatives	Liquid. Purified antibody supplied in 1x PBS buffer with 0.09% (w/v) sodium azide and 2% sucrose.
Form/Appearance	Liquid. Purified antibody supplied in 1x PBS buffer with 0.09% (w/v) sodium azide and 2% sucrose.
Concentration	0.5 mg/ml
Storage	Maintain refrigerated at 2-8°C for up to 2 weeks. For long term storage store at -20°C in small aliquots to prevent freeze-thaw cycles.
Note	For research use only
Protein Sequence	Synthetic peptide located within the following region: MCINNTLVCNGLQNCVYPWDENHCCKEKRKTSLLDQLTNTSGTVIGVTSCI
Clonality	Polyclonal
MW	60kDa
Uniprot ID	Q8R4I7
NCBI	NP_620416
Expiration Date	12 months from date of receipt.



Host: Rabbit, Target: NETO1, Positive co...



Immunohistochemistry with mice retinal n...



WB Suggested Anti-NETO1 Antibody Titrati...