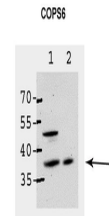


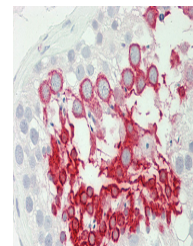
Product Datasheet

COPS6 antibody (orb584310)

Description	Rabbit polyclonal antibody to COPS6
Species/Host	Rabbit
Reactivity	Human
Conjugation	Unconjugated
Tested Applications	WB
Immunogen	The immunogen is a synthetic peptide directed towards the middle region of human COPS6
Target	COPS6
Preservatives	Liquid. Purified antibody supplied in 1x PBS buffer with 0.09% (w/v) sodium azide and 2% sucrose.
Form/Appearance	Liquid. Purified antibody supplied in 1x PBS buffer with 0.09% (w/v) sodium azide and 2% sucrose.
Concentration	0.5 mg/ml
Storage	Maintain refrigerated at 2-8°C for up to 2 weeks. For long term storage store at -20°C in small aliquots to prevent freeze-thaw cycles.
Note	For research use only
Protein Sequence	Synthetic peptide located within the following region: DHVARMTATGSGENSTVAEHLIAQHSIAKMLHSRVKLILEYVKASEAGEV
Clonality	Polyclonal
MW	36kDa
Uniprot ID	Q7L5N1
NCBI	NP_006824
Expiration Date	12 months from date of receipt.



Sample Type: 1. ABAE cells, 2. CHO-IR ce...



Rabbit Anti-COPS6 antibody, Formalin Fix...



WB Suggested Anti-COPS6 Antibody Titration...