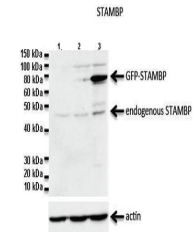


Product Datasheet

CDC26 antibody (orb584274)

Description	Rabbit polyclonal antibody to CDC26
Species/Host	Rabbit
Reactivity	Human
Conjugation	Unconjugated
Tested Applications	WB
Immunogen	The immunogen is a synthetic peptide directed towards the C terminal region of human CDC26
Target	CDC26
Preservatives	Liquid. Purified antibody supplied in 1x PBS buffer with 0.09% (w/v) sodium azide and 2% sucrose.
Form/Appearance	Liquid. Purified antibody supplied in 1x PBS buffer with 0.09% (w/v) sodium azide and 2% sucrose.
Concentration	0.5 mg/ml
Storage	Maintain refrigerated at 2-8°C for up to 2 weeks. For long term storage store at -20°C in small aliquots to prevent freeze-thaw cycles.
Note	For research use only
Protein Sequence	Synthetic peptide located within the following region: KQKEDVEVVGSDGEGEAGLSSDPKSREQMINDRIGYKQPQKPNRRSSQF
Clonality	Polyclonal
MW	10kDa
Uniprot ID	Q8NHZ8
NCBI	NP_644815
Expiration Date	12 months from date of receipt.



Lanes: 1: 20 ug Jukart cell lysate, 2: 2...



WB Suggested Anti-CDC26 Antibody Titrati...