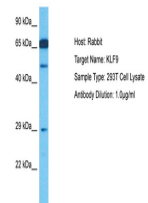


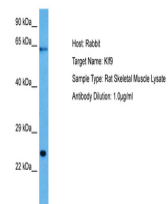
Product Datasheet

KLF9 antibody (orb583859)

Description	Rabbit polyclonal antibody to KLF9
Species/Host	Rabbit
Reactivity	Human, Rat
Conjugation	Unconjugated
Tested Applications	WB
Immunogen	The immunogen is a synthetic peptide directed towards the N terminal region of human KLF9
Target	KLF9
Preservatives	Liquid. Purified antibody supplied in 1x PBS buffer with 0.09% (w/v) sodium azide and 2% sucrose.
Form/Appearance	Liquid. Purified antibody supplied in 1x PBS buffer with 0.09% (w/v) sodium azide and 2% sucrose.
Concentration	0.5 mg/ml
Storage	Maintain refrigerated at 2-8°C for up to 2 weeks. For long term storage store at -20°C in small aliquots to prevent freeze-thaw cycles.
Note	For research use only
Protein Sequence	Synthetic peptide located within the following region: ARPVSDRTPAPLLLGGPAGTPPGGGALLGLRSLQGTSKPKEPASCLLKE
Clonality	Polyclonal
MW	27kDa
Uniprot ID	Q13886
NCBI	NP_001197
Expiration Date	12 months from date of receipt.



Host: Rabbit,
Target Name:
KLF9, Sample ...



Host: Rat,
Target Name:
KLF9, Sample
Tis...



WB Suggested
Anti-KLF9
Antibody
Titratio...