

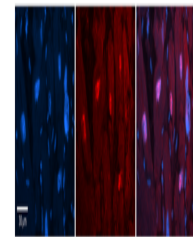
Product Datasheet

Arih2 antibody (orb583782)

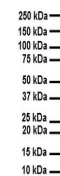
Description	Rabbit polyclonal antibody to Arih2
Species/Host	Rabbit
Reactivity	Human, Rat
Conjugation	Unconjugated
Tested Applications	IHC, WB
Immunogen	The immunogen is a synthetic peptide directed towards the C-terminal region of Rat Arih2
Target	Arih2
Preservatives	Liquid. Purified antibody supplied in 1x PBS buffer with 0.09% (w/v) sodium azide and 2% sucrose.
Form/Appearance	Liquid. Purified antibody supplied in 1x PBS buffer with 0.09% (w/v) sodium azide and 2% sucrose.
Concentration	0.5 mg/ml
Storage	Maintain refrigerated at 2-8°C for up to 2 weeks. For long term storage store at -20°C in small aliquots to prevent freeze-thaw cycles.
Note	For research use only
Protein Sequence	Synthetic peptide located within the following region: YYMESGPRKLFYEQQAQLEAEIENLSWKVERADSYDRGDLENQMHIAEQ
Clonality	Polyclonal
MW	54kDa
Uniprot ID	D3ZJB8
NCBI	NP_001012275
Expiration Date	12 months from date of receipt.



Host: Rabbit,
Target Name:
Arih2, Sample...



Rabbit Anti-Arih2 Antibody,
Catalog Numb...



WB Suggested
Anti-Arih2
antibody
Titrati...