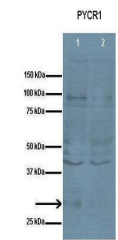


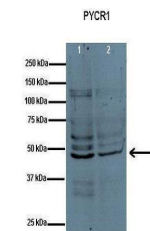
Product Datasheet

PYCR1 antibody (orb583694)

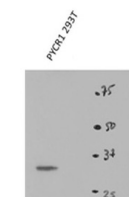
Description	Rabbit polyclonal antibody to PYCR1
Species/Host	Rabbit
Reactivity	Human
Conjugation	Unconjugated
Tested Applications	WB
Immunogen	The immunogen is a synthetic peptide directed towards the middle region of human PYCR1
Target	PYCR1
Preservatives	Liquid. Purified antibody supplied in 1x PBS buffer with 0.09% (w/v) sodium azide and 2% sucrose.
Form/Appearance	Liquid. Purified antibody supplied in 1x PBS buffer with 0.09% (w/v) sodium azide and 2% sucrose.
Concentration	0.5 mg/ml
Storage	Maintain refrigerated at 2-8°C for up to 2 weeks. For long term storage store at -20°C in small aliquots to prevent freeze-thaw cycles.
Note	For research use only
Protein Sequence	Synthetic peptide located within the following region: RSLLINAVEASCIRTRELQSMADQEQVSPAAIKKTILDKDHLPLELGSPE
Clonality	Polyclonal
MW	33kDa
Uniprot ID	A6NFM2
NCBI	NP_722546
Expiration Date	12 months from date of receipt.



Lanes: 1. 10 ug human fibroblast lysate,...



Lanes: 1. 10 ug human fibroblast lysate,...



PYCR1 antibody - middle region (orb583694)