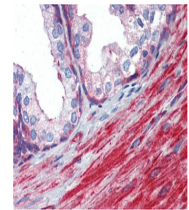


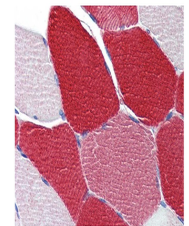
Product Datasheet

MYL6 antibody (orb583679)

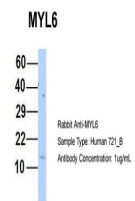
Description	Rabbit polyclonal antibody to MYL6
Species/Host	Rabbit
Reactivity	Human
Conjugation	Unconjugated
Tested Applications	IHC, WB
Immunogen	The immunogen is a synthetic peptide directed towards the N terminal region of human MYL6
Target	MYL6
Preservatives	Liquid. Purified antibody supplied in 1x PBS buffer with 0.09% (w/v) sodium azide and 2% sucrose.
Form/Appearance	Liquid. Purified antibody supplied in 1x PBS buffer with 0.09% (w/v) sodium azide and 2% sucrose.
Concentration	0.5 mg/ml
Storage	Maintain refrigerated at 2-8°C for up to 2 weeks. For long term storage store at -20°C in small aliquots to prevent freeze-thaw cycles.
Note	For research use only
Protein Sequence	Synthetic peptide located within the following region: CDFTEDQTAEFKEAFQLFDRTGDGKILYSQCGDVMRALGQNPTNAEVLKV
Clonality	Polyclonal
MW	17kDa
Uniprot ID	P60660
NCBI	NP_524147
Expiration Date	12 months from date of receipt.



Anti-MYL6 antibody IHC of human prostate...



Anti-MYL6 antibody IHC of human skeletal...



Host: Rabbit,
Target Name:
MYL6, Sample

...