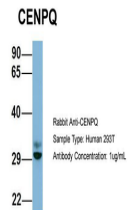


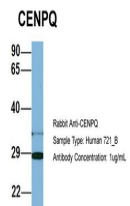
Product Datasheet

CENPQ antibody (orb583451)

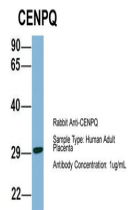
Description	Rabbit polyclonal antibody to CENPQ
Species/Host	Rabbit
Reactivity	Human
Conjugation	Unconjugated
Tested Applications	WB
Immunogen	The immunogen is a synthetic peptide directed towards the N terminal region of human CENPQ
Target	CENPQ
Preservatives	Liquid. Purified antibody supplied in 1x PBS buffer with 0.09% (w/v) sodium azide and 2% sucrose.
Form/Appearance	Liquid. Purified antibody supplied in 1x PBS buffer with 0.09% (w/v) sodium azide and 2% sucrose.
Concentration	0.5 mg/ml
Storage	Maintain refrigerated at 2-8°C for up to 2 weeks. For long term storage store at -20°C in small aliquots to prevent freeze-thaw cycles.
Note	For research use only
Protein Sequence	Synthetic peptide located within the following region: VRNTVKKKNKHLKDLSSSEQTKHTNLKHGKTAASKRKTWQPLSKSTRDHL
Clonality	Polyclonal
MW	30kDa
Uniprot ID	Q7L2Z9
NCBI	NP_060602
Expiration Date	12 months from date of receipt.



Sample Type:
Human 293T,
Antibody diluti...



Sample Type:
Human 721_B,
Antibody dilut...



Sample Type:
Human Adult
Placenta,
Antib...