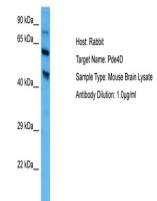


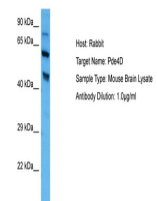
Product Datasheet

PDE4D antibody (orb583258)

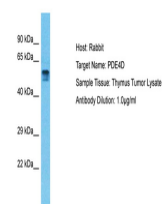
| | |
|----------------------------|---|
| Description | Rabbit polyclonal antibody to PDE4D |
| Species/Host | Rabbit |
| Reactivity | Human, Mouse |
| Conjugation | Unconjugated |
| Tested Applications | WB |
| Immunogen | The immunogen is a synthetic peptide directed towards the C-terminal region of Human PDE4D |
| Target | PDE4D |
| Preservatives | Liquid. Purified antibody supplied in 1x PBS buffer with 0.09% (w/v) sodium azide and 2% sucrose. |
| Form/Appearance | Liquid. Purified antibody supplied in 1x PBS buffer with 0.09% (w/v) sodium azide and 2% sucrose. |
| Concentration | 0.5 mg/ml |
| Storage | Maintain refrigerated at 2-8°C for up to 2 weeks. For long term storage store at -20°C in small aliquots to prevent freeze-thaw cycles. |
| Note | For research use only |
| Protein Sequence | Synthetic peptide located within the following region: FQFELTLEEDGESDTEKDSGSQVEEDTSCSDSKTLCTQDSESTEIPLDEQ |
| Clonality | Polyclonal |
| MW | 55kDa |
| Uniprot ID | Q08499 |
| Expiration Date | 12 months from date of receipt. |



Host: Mouse,
Target Name:
PDE4D, Sample
...



Host: Rabbit,
Target Name:
PDE4D,
Sample...



Host: Rabbit,
Target Name:
PDE4D,
Sample...