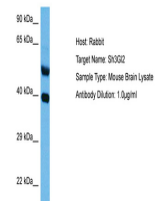


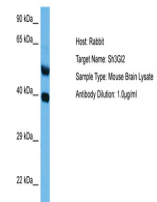
Product Datasheet

SH3GL2 antibody (orb583210)

Description	Rabbit polyclonal antibody to SH3GL2
Species/Host	Rabbit
Reactivity	Human, Mouse
Conjugation	Unconjugated
Tested Applications	WB
Immunogen	The immunogen is a synthetic peptide directed towards the middle region of human SH3GL2
Target	SH3GL2
Preservatives	Liquid. Purified antibody supplied in 1x PBS buffer with 0.09% (w/v) sodium azide and 2% sucrose.
Form/Appearance	Liquid. Purified antibody supplied in 1x PBS buffer with 0.09% (w/v) sodium azide and 2% sucrose.
Concentration	0.5 mg/ml
Storage	Maintain refrigerated at 2-8°C for up to 2 weeks. For long term storage store at -20°C in small aliquots to prevent freeze-thaw cycles.
Note	For research use only
Protein Sequence	Synthetic peptide located within the following region: PRREYQPKPRMSLEFPTGDSTQPNGGLSHTGTPKPSGVQMDQPCCRALYD
Clonality	Polyclonal
MW	40kDa
Uniprot ID	Q99962
NCBI	NP_003017
Expiration Date	12 months from date of receipt.



Host: Mouse,
Target Name:
SH3GL2,
Sample...



Host: Rabbit,
Target Name:
SH3GL2,
Sampl...



WB Suggested
Anti-SH3GL2
Antibody
Titrat...