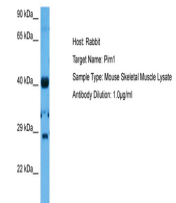


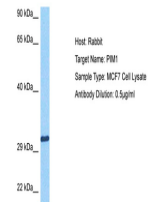
Product Datasheet

PIM1 antibody (orb583140)

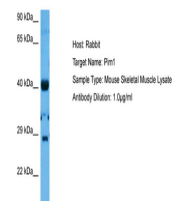
Description	Rabbit polyclonal antibody to PIM1
Species/Host	Rabbit
Reactivity	Human, Mouse
Conjugation	Unconjugated
Tested Applications	WB
Immunogen	The immunogen is a synthetic peptide directed towards the N terminal region of human PIM1
Target	PIM1
Preservatives	Liquid. Purified antibody supplied in 1x PBS buffer with 0.09% (w/v) sodium azide and 2% sucrose.
Form/Appearance	Liquid. Purified antibody supplied in 1x PBS buffer with 0.09% (w/v) sodium azide and 2% sucrose.
Concentration	0.5 mg/ml
Storage	Maintain refrigerated at 2-8°C for up to 2 weeks. For long term storage store at -20°C in small aliquots to prevent freeze-thaw cycles.
Note	For research use only
Protein Sequence	Synthetic peptide located within the following region: MLLSKINSLAHLRAAPCNDLHATKLPAGKEKEPLESQYQVGPLLGSGGFG
Clonality	Polyclonal
MW	45kDa
Uniprot ID	P11309
NCBI	NP_002639
Expiration Date	12 months from date of receipt.



Host: Mouse,
Target Name:
PIM1, Sample
T...



Host: Rabbit,
Target Name:
PIM1, Sample ...



Host: Rabbit,
Target Name:
PIM1, Sample ...