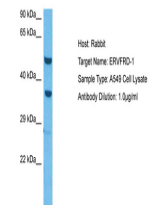


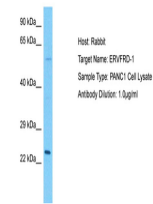
Product Datasheet

HERV-FRD antibody (orb582976)

Description	Rabbit polyclonal antibody to HERV-FRD
Species/Host	Rabbit
Reactivity	Human
Conjugation	Unconjugated
Tested Applications	WB
Immunogen	The immunogen is a synthetic peptide directed towards the N terminal region of human HERV-FRD
Target	ERVFRD-1
Preservatives	Liquid. Purified antibody supplied in 1x PBS buffer with 0.09% (w/v) sodium azide and 2% sucrose.
Form/Appearance	Liquid. Purified antibody supplied in 1x PBS buffer with 0.09% (w/v) sodium azide and 2% sucrose.
Concentration	0.5 mg/ml
Storage	Maintain refrigerated at 2-8°C for up to 2 weeks. For long term storage store at -20°C in small aliquots to prevent freeze-thaw cycles.
Note	For research use only
Protein Sequence	Synthetic peptide located within the following region: TGSPYSTNCWLCTSSSTETPGTAYPASPREWTSIEAELHISYRWDPNLKG
Clonality	Polyclonal
MW	60kDa
Uniprot ID	P60508
NCBI	NP_997465
Expiration Date	12 months from date of receipt.

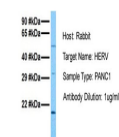


Host: Rabbit,
Target Name:
ERVFRD-1,
Sam...



Host: Rabbit,
Target Name:
ERVFRD-1,
Sam...

HERV



Host: Rabbit,
Target Name:
HERV, Sample

...