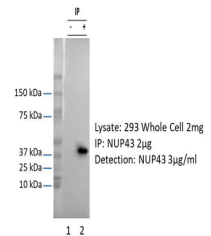


Product Datasheet

NUP43 antibody (orb582946)

Description	Rabbit polyclonal antibody to NUP43
Species/Host	Rabbit
Reactivity	Human
Conjugation	Unconjugated
Tested Applications	WB
Immunogen	The immunogen is a synthetic peptide directed towards the middle region of human NUP43
Target	NUP43
Preservatives	Liquid. Purified antibody supplied in 1x PBS buffer with 0.09% (w/v) sodium azide and 2% sucrose.
Form/Appearance	Liquid. Purified antibody supplied in 1x PBS buffer with 0.09% (w/v) sodium azide and 2% sucrose.
Concentration	0.5 mg/ml
Storage	Maintain refrigerated at 2-8°C for up to 2 weeks. For long term storage store at -20°C in small aliquots to prevent freeze-thaw cycles.
Note	For research use only
Protein Sequence	Synthetic peptide located within the following region: HQSVISSWLSTDPKDRIEITSLPSRSLSVNTLDVLPCLVCGTDAAEI
Clonality	Polyclonal
MW	42kDa
Uniprot ID	Q8NFH3
NCBI	NP_942590
Expiration Date	12 months from date of receipt.



NUP43 was immunoprecipitated from 1 mg H...



WB Suggested Anti-NUP43 Antibody Titration...