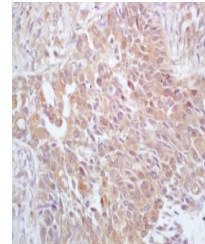


Product Datasheet

cdc25A (phospho-Thr506) antibody (orb5828)

Description	cdc25A (phospho-Thr506) antibody
Species/Host	Rabbit
Reactivity	Human, Mouse
Conjugation	Unconjugated
Tested Applications	FC
Immunogen	KLH conjugated Synthesised phosphopeptide derived from human cdc25A around the phosphorylation site of Thr506 (SR(p-T)WA)
Target	Phospho-cdc25A (Thr507)
Preservatives	0.01M TBS(pH7.4) with 1% rAlbumin, 0.03% Proclin300 and 50% Glycerol.
Form/Appearance	Liquid
Concentration	1mg/ml
Storage	Shipped at 4°C. Store at -20 °C for one year. Avoid repeated freeze/thaw cycles.
Note	For research use only
Isotype	IgG
Clonality	Polyclonal
MW	59 kDa
Uniprot ID	P30304
Dilution Range	ELISA=1:5000-10000
Expiration Date	12 months from date of receipt.



Immunohistochemical analysis of formalin...