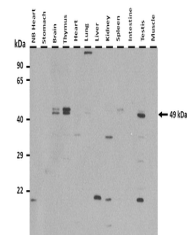


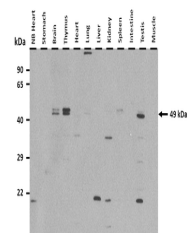
Product Datasheet

Sgms1 antibody (orb582775)

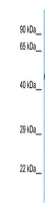
Description	Rabbit polyclonal antibody to Sgms1
Species/Host	Rabbit
Reactivity	Mouse
Conjugation	Unconjugated
Tested Applications	WB
Immunogen	The immunogen is a synthetic peptide directed towards the middle region of Mouse Sgms1
Target	Sgms1
Preservatives	Liquid. Purified antibody supplied in 1x PBS buffer with 0.09% (w/v) sodium azide and 2% sucrose.
Form/Appearance	Liquid. Purified antibody supplied in 1x PBS buffer with 0.09% (w/v) sodium azide and 2% sucrose.
Concentration	0.5 mg/ml
Storage	Maintain refrigerated at 2-8°C for up to 2 weeks. For long term storage store at -20°C in small aliquots to prevent freeze-thaw cycles.
Note	For research use only
Protein Sequence	Synthetic peptide located within the following region: LTTVMISVVHERVPPKEVQPPLPDTFFDHFNRVQWAFSICEINGMILVGL
Clonality	Polyclonal
MW	49 kDa
Uniprot ID	Q8VCQ6
NCBI	NP_659041
Expiration Date	12 months from date of receipt.



25 ug of the indicated Mouse tissue extr...



25 ug of the indicated Mouse tissue extr...



WB Suggested Anti-Sgms1 Antibody, Titrat...