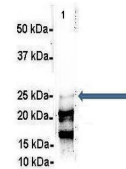


Product Datasheet

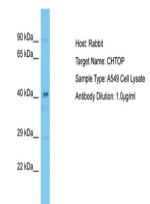
C1orf77 antibody (orb582705)

Description	Rabbit polyclonal antibody to C1orf77
Species/Host	Rabbit
Reactivity	Human, Mouse
Conjugation	Unconjugated
Tested Applications	IHC, IP, WB
Immunogen	The immunogen is a synthetic peptide directed towards the middle region of human C1orf77
Target	CHTOP
Preservatives	Liquid. Purified antibody supplied in 1x PBS buffer with 0.09% (w/v) sodium azide and 2% sucrose.
Form/Appearance	Liquid. Purified antibody supplied in 1x PBS buffer with 0.09% (w/v) sodium azide and 2% sucrose.
Concentration	0.5 mg/ml
Storage	Maintain refrigerated at 2-8°C for up to 2 weeks. For long term storage store at -20°C in small aliquots to prevent freeze-thaw cycles.
Note	For research use only
Protein Sequence	Synthetic peptide located within the following region: LKQSLKQRLGKSNIQARLGRPIGALARGAIGGRGLPIIQRGLPRGGLRGG
Clonality	Polyclonal
MW	26kDa
Uniprot ID	Q9Y3Y2
NCBI	NP_056422
Expiration Date	12 months from date of receipt.

C1orf77

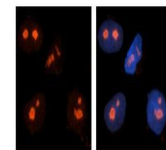


Amount and Sample Type:
500 ug mouse bra...



Host: Rabbit,
Target Name:
CHTOP,
Sample...

C1orf77



Red: C1orf77
Blue: DAPI

Sample Type:
Human brain
stem cells
(NT2...