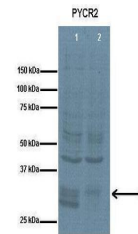


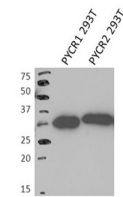
Product Datasheet

PYCR2 antibody (orb582555)

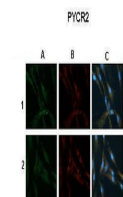
Description	Rabbit polyclonal antibody to PYCR2
Species/Host	Rabbit
Reactivity	Human
Conjugation	Unconjugated
Tested Applications	IHC, IP, WB
Immunogen	The immunogen is a synthetic peptide directed towards the middle region of human PYCR2
Target	PYCR2
Preservatives	Liquid. Purified antibody supplied in 1x PBS buffer with 0.09% (w/v) sodium azide and 2% sucrose.
Form/Appearance	Liquid. Purified antibody supplied in 1x PBS buffer with 0.09% (w/v) sodium azide and 2% sucrose.
Concentration	0.5 mg/ml
Storage	Maintain refrigerated at 2-8°C for up to 2 weeks. For long term storage store at -20°C in small aliquots to prevent freeze-thaw cycles.
Note	For research use only
Protein Sequence	Synthetic peptide located within the following region: LDSEQHPCQLKDNVCSPPGGATIHAIHFLESGGFRSLINAVEASCIRTRE
Clonality	Polyclonal
MW	34kDa
Uniprot ID	Q96C36
NCBI	NP_037460
Expiration Date	12 months from date of receipt.



Lanes: 1. 10 ug human fibroblast lysate,...



PYCR2 antibody - middle region (orb58255...)



A. Biorbyt PYCR2 antibody +anti-rabbit-Alexa Fluor 488
B. anti-H2Ac antibody + anti-mouse-Alexa Fluor 555
C. Overlay (A+B+C)

Sample Type: 1. WT human fibroblast 2. P...