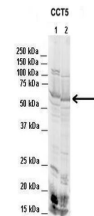


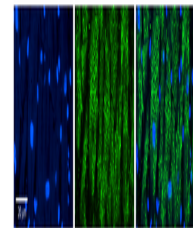
Product Datasheet

CCT5 antibody (orb582501)

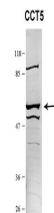
Description	Rabbit polyclonal antibody to CCT5
Species/Host	Rabbit
Reactivity	Human, Mouse
Conjugation	Unconjugated
Tested Applications	IHC, WB
Immunogen	The immunogen is a synthetic peptide directed towards the N terminal region of human CCT5
Target	CCT5
Preservatives	Liquid. Purified antibody supplied in 1x PBS buffer with 0.09% (w/v) sodium azide and 2% sucrose.
Form/Appearance	Liquid. Purified antibody supplied in 1x PBS buffer with 0.09% (w/v) sodium azide and 2% sucrose.
Concentration	0.5 mg/ml
Storage	Maintain refrigerated at 2-8°C for up to 2 weeks. For long term storage store at -20°C in small aliquots to prevent freeze-thaw cycles.
Note	For research use only
Protein Sequence	Synthetic peptide located within the following region: NDGATILSMMDVDHQIAKLMVELSKSQDDEIGDGTGVVVLGALLEEAE
Clonality	Polyclonal
MW	60kDa
Uniprot ID	P48643
NCBI	NP_036205
Expiration Date	12 months from date of receipt.



Lanes: 1. Mouse WT brain extract (80 ug)...



Rabbit Anti-CCT5 Antibody, Catalog Numbe...



Application: Western blotting, Species+t...