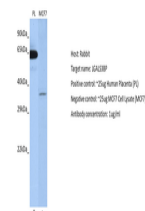


Product Datasheet

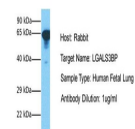
LGALS3BP antibody (orb582475)

Description	Rabbit polyclonal antibody to LGALS3BP
Species/Host	Rabbit
Reactivity	Human
Conjugation	Unconjugated
Tested Applications	WB
Immunogen	The immunogen is a synthetic peptide directed towards the middle region of human LGALS3BP
Target	LGALS3BP
Preservatives	Liquid. Purified antibody supplied in 1x PBS buffer with 0.09% (w/v) sodium azide and 2% sucrose.
Form/Appearance	Liquid. Purified antibody supplied in 1x PBS buffer with 0.09% (w/v) sodium azide and 2% sucrose.
Concentration	0.5 mg/ml
Storage	Maintain refrigerated at 2-8°C for up to 2 weeks. For long term storage store at -20°C in small aliquots to prevent freeze-thaw cycles.
Note	For research use only
Protein Sequence	Synthetic peptide located within the following region: NLSLYWSHEALFQKKTLQALEFHTVPFQLLARYKGLNLTEDTYKPRIYTS
Clonality	Polyclonal
MW	63kDa
Uniprot ID	Q08380
NCBI	NP_005558
Expiration Date	12 months from date of receipt.

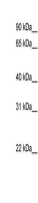


Host: Rabbit,
Target:
LGALS3BP,
Positive...

LGALS3BP



Host: Rabbit,
Target Name:
LGALS3BP,
Sam...



WB Suggested
Anti-LGALS3BP
Antibody Titr...