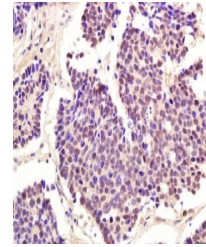


Product Datasheet

cdc2 (phospho-Thr161) antibody (orb5824)

| | |
|----------------------------|---|
| Description | cdc2 (phospho-Thr161) antibody |
| Species/Host | Rabbit |
| Reactivity | Human |
| Conjugation | Unconjugated |
| Tested Applications | IHC-P |
| Immunogen | KLH conjugated Synthesised phosphopeptide derived from human cdc2 around the phosphorylation site of Thr161 (VY(p-T)HE) |
| Target | Phospho-CDK1 (Thr161) |
| Preservatives | 0.01M TBS(pH7.4) with 1% rAlbumin, 0.03% Proclin300 and 50% Glycerol. |
| Form/Appearance | Liquid |
| Concentration | 1mg/ml |
| Storage | Shipped at 4°C. Store at -20 °C for one year. Avoid repeated freeze/thaw cycles. |
| Note | For research use only |
| Isotype | IgG |
| Clonality | Polyclonal |
| MW | 34 kDa |
| Uniprot ID | P06493 |
| Dilution Range | IHC-P=1:100-500 |
| Expiration Date | 12 months from date of receipt. |



Immunohistochemical analysis of formalin...