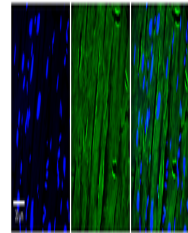


Product Datasheet

SH3KBP1 antibody (orb582338)

Description	Rabbit polyclonal antibody to SH3KBP1
Species/Host	Rabbit
Reactivity	Human
Conjugation	Unconjugated
Tested Applications	IHC, WB
Immunogen	The immunogen is a synthetic peptide directed towards the N terminal region of human SH3KBP1
Target	SH3KBP1
Preservatives	Liquid. Purified antibody supplied in 1x PBS buffer with 0.09% (w/v) sodium azide and 2% sucrose.
Form/Appearance	Liquid. Purified antibody supplied in 1x PBS buffer with 0.09% (w/v) sodium azide and 2% sucrose.
Concentration	0.5 mg/ml
Storage	Maintain refrigerated at 2-8°C for up to 2 weeks. For long term storage store at -20°C in small aliquots to prevent freeze-thaw cycles.
Note	For research use only
Protein Sequence	Synthetic peptide located within the following region: TGMFPSNFIKELSGEDELGISQDEQLSKSSLRETTGSESDGGDSSSTKS
Clonality	Polyclonal
MW	68
Uniprot ID	Q5JPT5
NCBI	NP_001019837
Expiration Date	12 months from date of receipt.



Rabbit Anti-SH3KBP1 Antibody, Catalog Nu...



WB Suggested Anti-SH3KBP1 Antibody Titra...