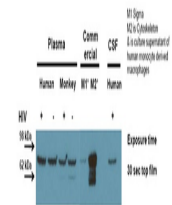


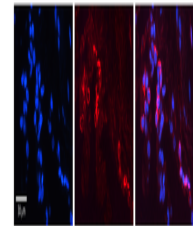
Product Datasheet

GSN antibody (orb582275)

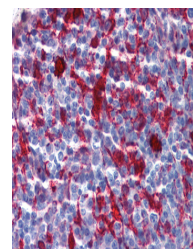
Description	Rabbit polyclonal antibody to GSN
Species/Host	Rabbit
Reactivity	Human
Conjugation	Unconjugated
Tested Applications	IHC, WB
Immunogen	The immunogen is a synthetic peptide directed towards the C terminal region of human GSN
Target	GSN
Preservatives	Liquid. Purified antibody supplied in 1x PBS buffer with 0.09% (w/v) sodium azide and 2% sucrose.
Form/Appearance	Liquid. Purified antibody supplied in 1x PBS buffer with 0.09% (w/v) sodium azide and 2% sucrose.
Concentration	0.5 mg/ml
Storage	Maintain refrigerated at 2-8°C for up to 2 weeks. For long term storage store at -20°C in small aliquots to prevent freeze-thaw cycles.
Note	For research use only
Protein Sequence	Synthetic peptide located within the following region: KPMIIYKGGTSREGGQTAPASTRLFQVRANSAGATRAVEVLPKAGALNSN
Clonality	Polyclonal
MW	83kDa
Uniprot ID	P06396
NCBI	NP_000168
Expiration Date	12 months from date of receipt.



GSN antibody - C-terminal region (orb582275)



GSN antibody - C-terminal region (orb582275)



IHC Information: Paraffin embedded tonsil...