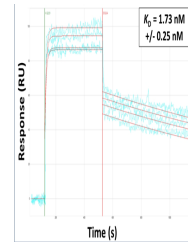


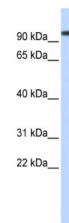
Product Datasheet

ACE2 antibody (orb582208)

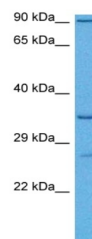
Description	Rabbit polyclonal antibody to ACE2
Species/Host	Rabbit
Reactivity	Human, Rat
Conjugation	Unconjugated
Tested Applications	IHC, WB
Immunogen	The immunogen is a synthetic peptide directed towards the middle region of human ACE2
Target	ACE2
Preservatives	Liquid. Purified antibody supplied in 1x PBS buffer with 0.09% (w/v) sodium azide and 2% sucrose.
Form/Appearance	Liquid. Purified antibody supplied in 1x PBS buffer with 0.09% (w/v) sodium azide and 2% sucrose.
Concentration	0.5 mg/ml
Storage	For short term use, store at 2-8C up to 1 week. For long term storage, store at -2°C in small aliquots to prevent freeze-thaw cycles.
Note	For research use only
Protein Sequence	Synthetic peptide located within the following region: FVTAPKNVSDIIPRTEVEKAIRMRSRINDAFRLNDNSLEFLGIQPTLGP
Clonality	Polyclonal
Purity	Affinity Purified
MW	89kDa
Uniprot ID	Q9BYF1
NCBI	NP_068576
Expiration Date	12 months from date of receipt.



Purified polyclonal antibodies were immo...



WB Suggested Anti-ACE2 Antibody Titratio...



Host: Rabbit.
Target Name: ACE2. Sample

...