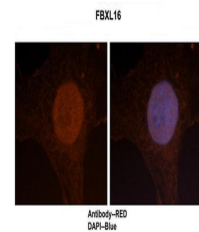


Product Datasheet

FBXL16 antibody (orb581971)

Description	Rabbit polyclonal antibody to FBXL16
Species/Host	Rabbit
Reactivity	Human
Conjugation	Unconjugated
Tested Applications	IHC, WB
Immunogen	The immunogen is a synthetic peptide directed towards the N terminal region of human FBXL16
Target	FBXL16
Preservatives	Liquid. Purified antibody supplied in 1x PBS buffer with 0.09% (w/v) sodium azide and 2% sucrose.
Form/Appearance	Liquid. Purified antibody supplied in 1x PBS buffer with 0.09% (w/v) sodium azide and 2% sucrose.
Concentration	0.5 mg/ml
Storage	Maintain refrigerated at 2-8°C for up to 2 weeks. For long term storage store at -20°C in small aliquots to prevent freeze-thaw cycles.
Note	For research use only
Protein Sequence	Synthetic peptide located within the following region: PPPTLPPPSLAAPLSRAALAGGPCTPAGGPASALAPGHPAERPPLATDEK
Clonality	Polyclonal
MW	52kDa
Uniprot ID	Q8N461
NCBI	NP_699181
Expiration Date	12 months from date of receipt.



Application: IHC,
Species+tissue/cell
ty...



WB Suggested
Anti-FBXL16
Antibody Titrat...