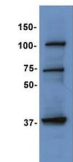


Product Datasheet

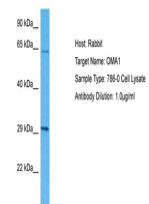
OMA1 antibody (orb581846)

Description	Rabbit polyclonal antibody to OMA1
Species/Host	Rabbit
Reactivity	Human
Conjugation	Unconjugated
Tested Applications	WB
Immunogen	The immunogen is a synthetic peptide directed towards the middle region of human OMA1
Target	OMA1
Preservatives	Liquid. Purified antibody supplied in 1x PBS buffer with 0.09% (w/v) sodium azide and 2% sucrose.
Form/Appearance	Liquid. Purified antibody supplied in 1x PBS buffer with 0.09% (w/v) sodium azide and 2% sucrose.
Concentration	0.5 mg/ml
Storage	Maintain refrigerated at 2-8°C for up to 2 weeks. For long term storage store at -20°C in small aliquots to prevent freeze-thaw cycles.
Note	For research use only
Protein Sequence	Synthetic peptide located within the following region: WAICPRDSLALLCQWIQSKLQEYMFNRPYSRKLEAEADKIGLLLAAKACA
Clonality	Polyclonal
MW	60 kDa
Uniprot ID	Q96E52
NCBI	NP_660286
Expiration Date	12 months from date of receipt.

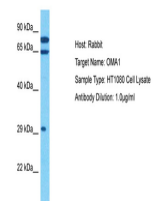
OMA1



Sample Type:
HepG2 cells,
Primary diluti...



Host: Rabbit,
Target Name:
OMA1, Sample
...



Host: Rabbit,
Target Name:
OMA1, Sample
...