

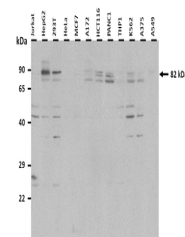
Product Datasheet

DNM1L antibody (orb581671)

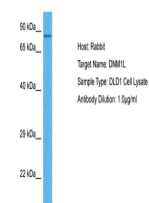
Description	Rabbit polyclonal antibody to DNM1L
Species/Host	Rabbit
Reactivity	Human, Mouse
Conjugation	Unconjugated
Tested Applications	IHC, WB
Immunogen	The immunogen is a synthetic peptide directed towards the N terminal region of human DNM1L
Target	DNM1L
Preservatives	Liquid. Purified antibody supplied in 1x PBS buffer with 0.09% (w/v) sodium azide and 2% sucrose.
Form/Appearance	Liquid. Purified antibody supplied in 1x PBS buffer with 0.09% (w/v) sodium azide and 2% sucrose.
Concentration	0.5 mg/ml
Storage	Maintain refrigerated at 2-8°C for up to 2 weeks. For long term storage store at -20°C in small aliquots to prevent freeze-thaw cycles.
Note	For research use only
Protein Sequence	Synthetic peptide located within the following region: IRQEIENETERISGNNKGVSPPEIHLKIFSPNVVNLTLVDLPGMTKVPVG
Clonality	Polyclonal
MW	82 kDa
Uniprot ID	O00429
NCBI	NP_036192
Expiration Date	12 months from date of receipt.



Sample Type:
2. mouse brain extracts (80...



25 ug of the indicated
Human whole cell ...



Host: Rabbit,
Target Name:
DNM1L,
Sample...