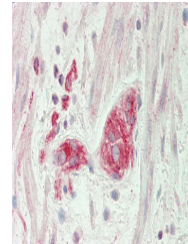


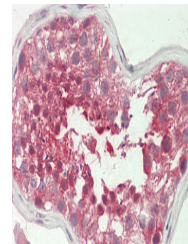
Product Datasheet

BCKDK antibody (orb581584)

Description	Rabbit polyclonal antibody to BCKDK
Species/Host	Rabbit
Reactivity	Human
Conjugation	Unconjugated
Tested Applications	WB
Immunogen	The immunogen is a synthetic peptide directed towards the N terminal region of human BCKDK
Target	BCKDK
Preservatives	Liquid. Purified antibody supplied in 1x PBS buffer with 0.09% (w/v) sodium azide and 2% sucrose.
Form/Appearance	Liquid. Purified antibody supplied in 1x PBS buffer with 0.09% (w/v) sodium azide and 2% sucrose.
Concentration	0.5 mg/ml
Storage	Maintain refrigerated at 2-8°C for up to 2 weeks. For long term storage store at -20°C in small aliquots to prevent freeze-thaw cycles.
Note	For research use only
Protein Sequence	Synthetic peptide located within the following region: CLPFIIGCNPTILHVHELYIRAFQKLTDFPPIKDQADEAQYQQLVRQLLD
Clonality	Polyclonal
MW	43kDa
Uniprot ID	O14874
NCBI	NP_005872
Expiration Date	12 months from date of receipt.



Rabbit Anti-BCKDK antibody, Formalin Fix...



Rabbit Anti-BCKDK antibody, Formalin Fix...



WB Suggested Anti-BCKDK Antibody Titrati...