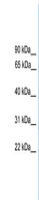


Product Datasheet

RCAN2 antibody (orb581575)

Description	Rabbit polyclonal antibody to RCAN2
Species/Host	Rabbit
Reactivity	Human
Conjugation	Unconjugated
Tested Applications	WB
Immunogen	The immunogen is a synthetic peptide directed towards the middle region of human RCAN2
Target	RCAN2
Preservatives	Liquid. Purified antibody supplied in 1x PBS buffer with 0.09% (w/v) sodium azide and 2% sucrose.
Form/Appearance	Liquid. Purified antibody supplied in 1x PBS buffer with 0.09% (w/v) sodium azide and 2% sucrose.
Concentration	0.5 mg/ml
Storage	Maintain refrigerated at 2-8°C for up to 2 weeks. For long term storage store at -20°C in small aliquots to prevent freeze-thaw cycles.
Note	For research use only
Protein Sequence	Synthetic peptide located within the following region: LHETQFRGKCLKLYFAQVQTPETDGDGDKLHLAPPQPAKQFLISPPSSPPVG
Clonality	Polyclonal
MW	22kDa
Uniprot ID	Q14206
NCBI	NP_005813
Expiration Date	12 months from date of receipt.



WB Suggested
Anti-RCAN2
Antibody
Titrati...