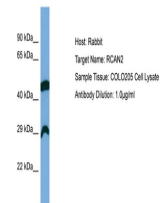


## Product Datasheet

### RCAN2 antibody (orb581574)

|                            |                                                                                                                                         |
|----------------------------|-----------------------------------------------------------------------------------------------------------------------------------------|
| <b>Description</b>         | Rabbit polyclonal antibody to RCAN2                                                                                                     |
| <b>Species/Host</b>        | Rabbit                                                                                                                                  |
| <b>Reactivity</b>          | Human                                                                                                                                   |
| <b>Conjugation</b>         | Unconjugated                                                                                                                            |
| <b>Tested Applications</b> | WB                                                                                                                                      |
| <b>Immunogen</b>           | The immunogen is a synthetic peptide directed towards the middle region of HUMAN RCAN2                                                  |
| <b>Target</b>              | RCAN2                                                                                                                                   |
| <b>Preservatives</b>       | Liquid. Purified antibody supplied in 1x PBS buffer with 0.09% (w/v) sodium azide and 2% sucrose.                                       |
| <b>Form/Appearance</b>     | Liquid. Purified antibody supplied in 1x PBS buffer with 0.09% (w/v) sodium azide and 2% sucrose.                                       |
| <b>Concentration</b>       | 0.5 mg/ml                                                                                                                               |
| <b>Storage</b>             | Maintain refrigerated at 2-8°C for up to 2 weeks. For long term storage store at -20°C in small aliquots to prevent freeze-thaw cycles. |
| <b>Note</b>                | For research use only                                                                                                                   |
| <b>Protein Sequence</b>    | Synthetic peptide located within the following region:<br>VTFQLFKSFRRVRINFSNPKSAARARIELHETQFRGKCLKLYFAQVQTPE                            |
| <b>Clonality</b>           | Polyclonal                                                                                                                              |
| <b>MW</b>                  | 26kDa                                                                                                                                   |
| <b>Uniprot ID</b>          | <a href="#">Q14206</a>                                                                                                                  |
| <b>Expiration Date</b>     | 12 months from date of receipt.                                                                                                         |



Host: Rabbit,  
Target Name:  
RCAN2,  
Sample...