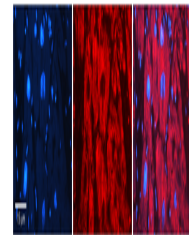


Product Datasheet

EIF2B1 antibody (orb581517)

Description	Rabbit polyclonal antibody to EIF2B1
Species/Host	Rabbit
Reactivity	Human
Conjugation	Unconjugated
Tested Applications	IHC, WB
Immunogen	The immunogen is a synthetic peptide directed towards the C terminal region of human EIF2B1
Target	EIF2B1
Preservatives	Liquid. Purified antibody supplied in 1x PBS buffer with 0.09% (w/v) sodium azide and 2% sucrose.
Form/Appearance	Liquid. Purified antibody supplied in 1x PBS buffer with 0.09% (w/v) sodium azide and 2% sucrose.
Concentration	0.5 mg/ml
Storage	Maintain refrigerated at 2-8°C for up to 2 weeks. For long term storage store at -20°C in small aliquots to prevent freeze-thaw cycles.
Note	For research use only
Protein Sequence	Synthetic peptide located within the following region: ADTLKVAQTGQDLKEEHPWVDYTAPSLITLLFTDLGVLTPSAVSDLIKL
Clonality	Polyclonal
MW	34kDa
Uniprot ID	Q14232
NCBI	NP_001405
Expiration Date	12 months from date of receipt.



Rabbit Anti-EIF2B1 Antibody, Catalog Num...



WB Suggested Anti-EIF2B1 Antibody Titrat...