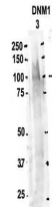


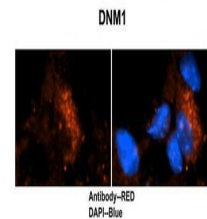
Product Datasheet

DNM1 antibody (orb581445)

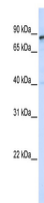
Description	Rabbit polyclonal antibody to DNM1
Species/Host	Rabbit
Reactivity	Human, Mouse, Rat
Conjugation	Unconjugated
Tested Applications	IHC, WB
Immunogen	The immunogen is a synthetic peptide directed towards the middle region of human DNM1
Target	DNM1
Preservatives	Liquid. Purified antibody supplied in 1x PBS buffer with 0.09% (w/v) sodium azide and 2% sucrose.
Form/Appearance	Liquid. Purified antibody supplied in 1x PBS buffer with 0.09% (w/v) sodium azide and 2% sucrose.
Concentration	0.5 mg/ml
Storage	Maintain refrigerated at 2-8°C for up to 2 weeks. For long term storage store at -20°C in small aliquots to prevent freeze-thaw cycles.
Note	For research use only
Protein Sequence	Synthetic peptide located within the following region: PPVDDSWLQVQSVPAGRRSPTSSPTPQRRAPAVPPARPGSRGPAPGPPPA
Clonality	Polyclonal
MW	95kDa
Uniprot ID	P39053
NCBI	NP_004399
Expiration Date	12 months from date of receipt.



Sample Type: 3.
rat brain extract
(80 ug...



Application: IHC,
Species+tissue/cell
ty...



WB Suggested
Anti-DNM1
Antibody Titratio...