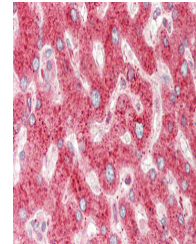


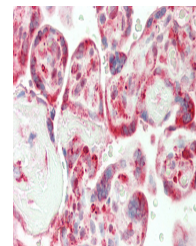
Product Datasheet

CRIP1 antibody (orb581377)

Description	Rabbit polyclonal antibody to CRIP1
Species/Host	Rabbit
Reactivity	Human
Conjugation	Unconjugated
Tested Applications	WB
Immunogen	The immunogen is a synthetic peptide directed towards the N terminal region of human CRIP1
Target	CRIP1
Preservatives	Liquid. Purified antibody supplied in 1x PBS buffer with 0.09% (w/v) sodium azide and 2% sucrose.
Form/Appearance	Liquid. Purified antibody supplied in 1x PBS buffer with 0.09% (w/v) sodium azide and 2% sucrose.
Concentration	0.5 mg/ml
Storage	Maintain refrigerated at 2-8°C for up to 2 weeks. For long term storage store at -20°C in small aliquots to prevent freeze-thaw cycles.
Note	For research use only
Protein Sequence	Synthetic peptide located within the following region: MPKCPKCNEKYFAERVTSLGKDWHRPCLKCEKCGKTLTSGGHAEHEGKP
Clonality	Polyclonal
MW	8kDa
Uniprot ID	P50238
NCBI	NP_001302
Expiration Date	12 months from date of receipt.



Rabbit Anti-CRIP1 antibody, Formalin Fix...



Rabbit Anti-CRIP1 antibody, Formalin Fix...



WB Suggested Anti-CRIP1 Antibody Titration...