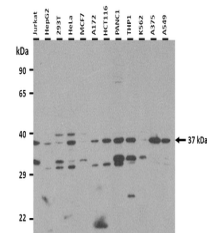


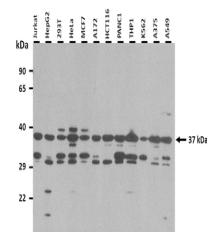
Product Datasheet

MAS1 antibody (orb581299)

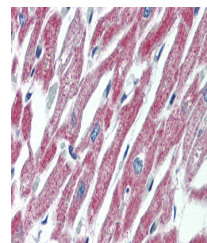
Description	Rabbit polyclonal antibody to MAS1
Species/Host	Rabbit
Reactivity	Human
Conjugation	Unconjugated
Tested Applications	IHC, WB
Immunogen	The immunogen is a synthetic peptide directed towards the middle region of human MAS1
Target	MAS1
Preservatives	Liquid. Purified antibody supplied in 1x PBS buffer with 0.09% (w/v) sodium azide and 2% sucrose.
Form/Appearance	Liquid. Purified antibody supplied in 1x PBS buffer with 0.09% (w/v) sodium azide and 2% sucrose.
Concentration	0.5 mg/ml
Storage	Maintain refrigerated at 2-8°C for up to 2 weeks. For long term storage store at -20°C in small aliquots to prevent freeze-thaw cycles.
Note	For research use only
Protein Sequence	Synthetic peptide located within the following region: VHIFAILSFLVFTPLMLVSSSTILVVKIRKNTWASHSSKLYIVIMVTIII
Clonality	Polyclonal
MW	37 kDa
Uniprot ID	P04201
NCBI	NP_002368
Expiration Date	12 months from date of receipt.



25 ug of the indicated Human whole cell ...



25 ug of the indicated Human whole cell ...



Immunohistochemistry with Human Heart ly...