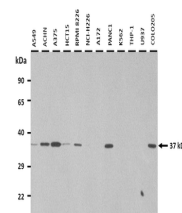


Product Datasheet

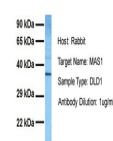
MAS1 antibody (orb581298)

Description	Rabbit polyclonal antibody to MAS1
Species/Host	Rabbit
Reactivity	Human
Conjugation	Unconjugated
Tested Applications	IHC, WB
Immunogen	The immunogen is a synthetic peptide directed towards the middle region of human MAS1
Target	MAS1
Preservatives	Liquid. Purified antibody supplied in 1x PBS buffer with 0.09% (w/v) sodium azide and 2% sucrose.
Form/Appearance	Liquid. Purified antibody supplied in 1x PBS buffer with 0.09% (w/v) sodium azide and 2% sucrose.
Concentration	1.0 mg/ml
Storage	Maintain refrigerated at 2-8°C for up to 2 weeks. For long term storage store at -20°C in small aliquots to prevent freeze-thaw cycles.
Note	For research use only
Protein Sequence	Synthetic peptide located within the following region: RPKYQSALVCALLWALSCLVTTMEYVMCIDREEESHRSRND CRAVIIFIAI
Clonality	Polyclonal
MW	37 kDa
Uniprot ID	P04201
NCBI	NP_002368
Expiration Date	12 months from date of receipt.

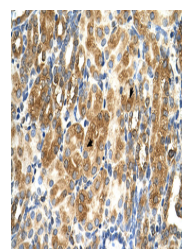


25 ug of the indicated Human whole cell ...

MAS1



Host: Rabbit,
Target Name:
MAS1, Sample
...



Human kidney