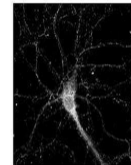


Product Datasheet

LRRTM4 antibody (orb580915)

Description	Rabbit polyclonal antibody to LRRTM4
Species/Host	Rabbit
Reactivity	Human, Rat
Conjugation	Unconjugated
Tested Applications	IHC, WB
Immunogen	The immunogen is a synthetic peptide directed towards the middle region of human LRRTM4
Target	LRRTM4
Preservatives	Liquid. Purified antibody supplied in 1x PBS buffer with 0.09% (w/v) sodium azide and 2% sucrose.
Form/Appearance	Liquid. Purified antibody supplied in 1x PBS buffer with 0.09% (w/v) sodium azide and 2% sucrose.
Concentration	0.5 mg/ml
Storage	Maintain refrigerated at 2-8°C for up to 2 weeks. For long term storage store at -20°C in small aliquots to prevent freeze-thaw cycles.
Note	For research use only
Protein Sequence	Synthetic peptide located within the following region: FYWLKNFKGNKESTMICAGPKHIQGEKVSDAVETYNICSEVQVVNTERSH
Clonality	Polyclonal
MW	59kDa
Uniprot ID	Q6ZT31
NCBI	NP_079269
Expiration Date	12 months from date of receipt.

LRRTM4



White: LRRTM4

Sample Type:
Rat
Hippocampal
Neurons - 1...



WB Suggested
Anti-LRRTM4
Antibody
Titrat...