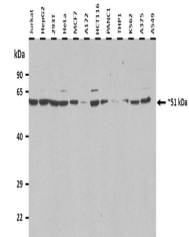


Product Datasheet

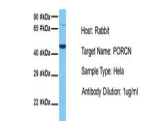
PORCN antibody (orb580851)

Description	Rabbit polyclonal antibody to PORCN
Species/Host	Rabbit
Reactivity	Human, Mouse
Conjugation	Unconjugated
Tested Applications	IHC, WB
Immunogen	The immunogen is a synthetic peptide directed towards the N terminal region of human PORCN
Target	PORCN
Preservatives	Liquid. Purified antibody supplied in 1x PBS buffer with 0.09% (w/v) sodium azide and 2% sucrose.
Form/Appearance	Liquid. Purified antibody supplied in 1x PBS buffer with 0.09% (w/v) sodium azide and 2% sucrose.
Concentration	0.5 mg/ml
Storage	Maintain refrigerated at 2-8°C for up to 2 weeks. For long term storage store at -20°C in small aliquots to prevent freeze-thaw cycles.
Note	For research use only
Protein Sequence	Synthetic peptide located within the following region: ACRLWLRLGLPSYLKHAHVAGGFFSLYHFFQLHMMVWVLLSLLCYLVLF
Clonality	Polyclonal
MW	52 kDa
Uniprot ID	Q9H237
NCBI	NP_073736
Expiration Date	12 months from date of receipt.

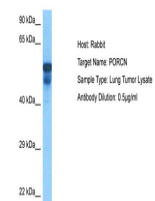


25 ug of the indicated Human whole cell ...

PORCN



Host: Rabbit,
Target Name:
PORCN,
Sample...



Host: Rabbit,
Target Name:
PORCN,
Sample...