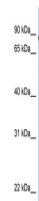


Product Datasheet

JPH1 antibody (orb580771)

Description	Rabbit polyclonal antibody to JPH1
Species/Host	Rabbit
Reactivity	Human
Conjugation	Unconjugated
Tested Applications	WB
Immunogen	The immunogen is a synthetic peptide directed towards the C terminal region of human JPH1
Target	JPH1
Preservatives	Liquid. Purified antibody supplied in 1x PBS buffer with 0.09% (w/v) sodium azide and 2% sucrose.
Form/Appearance	Liquid. Purified antibody supplied in 1x PBS buffer with 0.09% (w/v) sodium azide and 2% sucrose.
Concentration	0.5 mg/ml
Storage	Maintain refrigerated at 2-8°C for up to 2 weeks. For long term storage store at -20°C in small aliquots to prevent freeze-thaw cycles.
Note	For research use only
Protein Sequence	Synthetic peptide located within the following region: SNGELHSQYHGYYVKNAPQHPPVDVEDGDGSSQSSSALVHKPSANKWSP
Clonality	Polyclonal
MW	72kDa
Uniprot ID	Q9HDC5
NCBI	NP_065698
Expiration Date	12 months from date of receipt.



WB Suggested
Anti-JPH1
Antibody
Titratio...