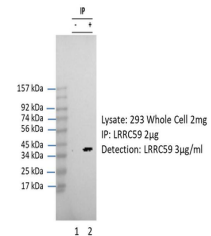


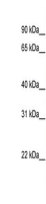
Product Datasheet

LRRC59 antibody (orb580694)

Description	Rabbit polyclonal antibody to LRRC59
Species/Host	Rabbit
Reactivity	Human
Conjugation	Unconjugated
Tested Applications	IHC-P, WB
Immunogen	The immunogen is a synthetic peptide directed towards the N terminal region of human LRRC59
Target	LRRC59
Preservatives	Liquid. Purified antibody supplied in 1x PBS buffer with 0.09% (w/v) sodium azide and 2% sucrose.
Form/Appearance	Liquid. Purified antibody supplied in 1x PBS buffer with 0.09% (w/v) sodium azide and 2% sucrose.
Concentration	0.5 mg/ml
Storage	Maintain refrigerated at 2-8°C for up to 2 weeks. For long term storage store at -20°C in small aliquots to prevent freeze-thaw cycles.
Note	For research use only
Protein Sequence	Synthetic peptide located within the following region: TKAGSKGGNLRDKLDGNELDLSLSDLNEVPVKELAAALPKATILDLSCNKL
Clonality	Polyclonal
MW	35kDa
Uniprot ID	Q5RJR8
NCBI	NP_060979
Expiration Date	12 months from date of receipt.



LRRC59 was immunoprecipitated from 1 mg ...



WB Suggested Anti-LRRC59 Antibody Titrat...