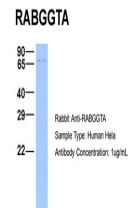


Product Datasheet

RABGGTA antibody (orb580663)

| | |
|----------------------------|---|
| Description | Rabbit polyclonal antibody to RABGGTA |
| Species/Host | Rabbit |
| Reactivity | Human |
| Conjugation | Unconjugated |
| Tested Applications | WB |
| Immunogen | The immunogen is a synthetic peptide directed towards the N terminal region of human RABGGTA |
| Target | RABGGTA |
| Preservatives | Liquid. Purified antibody supplied in 1x PBS buffer with 0.09% (w/v) sodium azide and 2% sucrose. |
| Form/Appearance | Liquid. Purified antibody supplied in 1x PBS buffer with 0.09% (w/v) sodium azide and 2% sucrose. |
| Concentration | 0.5 mg/ml |
| Storage | Maintain refrigerated at 2-8°C for up to 2 weeks. For long term storage store at -20°C in small aliquots to prevent freeze-thaw cycles. |
| Note | For research use only |
| Protein Sequence | Synthetic peptide located within the following region: ELAFTDSLITRNFSNYSSWHYRSCLLPQLHPQPDSGPGRLPEDVLLKEL |
| Clonality | Polyclonal |
| MW | 65kDa |
| Uniprot ID | Q92696 |
| NCBI | NP_878256 |
| Expiration Date | 12 months from date of receipt. |



Host: Rabbit,
Target Name:
RABGGTA,
Samp...



WB Suggested
Anti-RABGGTA
Antibody Titra...