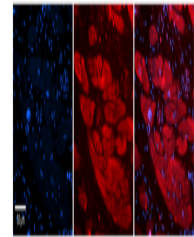


Product Datasheet

ENO3 antibody (orb580332)

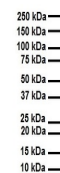
Description	Rabbit polyclonal antibody to ENO3
Species/Host	Rabbit
Reactivity	Human
Conjugation	Unconjugated
Tested Applications	IHC, WB
Immunogen	The immunogen is a synthetic peptide directed towards the N terminal region of human ENO3
Target	ENO3
Preservatives	Liquid. Purified antibody supplied in 1x PBS buffer with 0.09% (w/v) sodium azide and 2% sucrose.
Form/Appearance	Liquid. Purified antibody supplied in 1x PBS buffer with 0.09% (w/v) sodium azide and 2% sucrose.
Concentration	0.5 mg/ml
Storage	Maintain refrigerated at 2-8°C for up to 2 weeks. For long term storage store at -20°C in small aliquots to prevent freeze-thaw cycles.
Note	For research use only
Protein Sequence	Synthetic peptide located within the following region: EVDLHTAKGRFRAAVPSGASTGIYEALRLDGDKGRYLGKGV LKAVENIN
Clonality	Polyclonal
MW	47kDa
Uniprot ID	P13929
NCBI	NP_001967
Expiration Date	12 months from date of receipt.



Rabbit Anti-ENO3 Antibody, Catalog Numbe...



WB Suggested Anti-ENO3 Antibody Titratio...



WB Suggested Anti-ENO3 antibody Titratio...