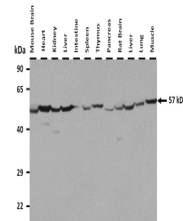


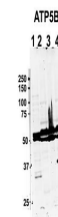
Product Datasheet

ATP5F1B antibody (orb580322)

Description	Rabbit polyclonal antibody to ATP5F1B
Species/Host	Rabbit
Reactivity	Human, Mouse
Conjugation	Unconjugated
Tested Applications	IHC, IP, WB
Immunogen	The immunogen is a synthetic peptide directed towards the C terminal region of human ATP5B
Target	ATP5F1B
Preservatives	Liquid. Purified antibody supplied in 1x PBS buffer with 0.09% (w/v) sodium azide and 2% sucrose.
Form/Appearance	Liquid. Purified antibody supplied in 1x PBS buffer with 0.09% (w/v) sodium azide and 2% sucrose.
Concentration	1.0 mg/ml
Storage	Maintain refrigerated at 2-8°C for up to 2 weeks. For long term storage store at -20°C in small aliquots to prevent freeze-thaw cycles.
Note	For research use only
Protein Sequence	Synthetic peptide located within the following region: MGKLVPLKETIKGFQQILAGEYDHLPEQAFYMVGPPIEEAVAKADKLAEEH
Clonality	Polyclonal
MW	57 kDa
Uniprot ID	P06576
NCBI	NP_001677
Expiration Date	12 months from date of receipt.



25 ug of the indicated Mouse whole tissue...



ATP5B antibody - C-terminal region (orb5...



ATP5B antibody - C-terminal region (orb5...