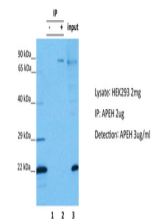


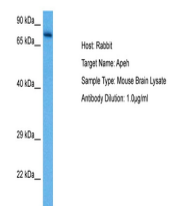
Product Datasheet

APEH antibody (orb580319)

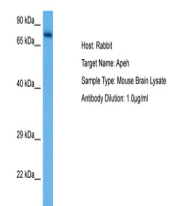
Description	Rabbit polyclonal antibody to APEH
Species/Host	Rabbit
Reactivity	Human, Mouse
Conjugation	Unconjugated
Tested Applications	IHC-P, WB
Immunogen	The immunogen is a synthetic peptide directed towards the N terminal region of human APEH
Target	APEH
Preservatives	Liquid. Purified antibody supplied in 1x PBS buffer with 0.09% (w/v) sodium azide and 2% sucrose.
Form/Appearance	Liquid. Purified antibody supplied in 1x PBS buffer with 0.09% (w/v) sodium azide and 2% sucrose.
Concentration	0.5 mg/ml
Storage	Maintain refrigerated at 2-8°C for up to 2 weeks. For long term storage store at -20°C in small aliquots to prevent freeze-thaw cycles.
Note	For research use only
Protein Sequence	Synthetic peptide located within the following region: VYEDDCFGCLSWSHSETHLLYVAEKRPKAESFFQTKALDVSASDDEIAR
Clonality	Polyclonal
MW	81kDa
Uniprot ID	P13798
NCBI	NP_001631
Expiration Date	12 months from date of receipt.



APEH was immunoprecipitated from 2 mg HEK293T cell lysate.



Host: Mouse, Target Name: APEH, Sample T...



Host: Rabbit, Target Name: APEH, Sample ...