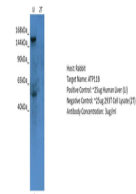


Product Datasheet

ATP11B antibody (orb579945)

Description	Rabbit polyclonal antibody to ATP11B
Species/Host	Rabbit
Reactivity	Human
Conjugation	Unconjugated
Tested Applications	WB
Immunogen	The immunogen is a synthetic peptide directed towards the N terminal region of human ATP11B
Target	ATP11B
Preservatives	Liquid. Purified antibody supplied in 1x PBS buffer with 0.09% (w/v) sodium azide and 2% sucrose.
Form/Appearance	Liquid. Purified antibody supplied in 1x PBS buffer with 0.09% (w/v) sodium azide and 2% sucrose.
Concentration	0.5 mg/ml
Storage	Maintain refrigerated at 2-8°C for up to 2 weeks. For long term storage store at -20°C in small aliquots to prevent freeze-thaw cycles.
Note	For research use only
Protein Sequence	Synthetic peptide located within the following region: DIVRIAKDEIFPADLVLLSSDRLDGSCHVTTASLDGETNLKTHVAVPETA
Clonality	Polyclonal
MW	134kDa
Uniprot ID	Q9Y2G3
NCBI	NP_055431
Expiration Date	12 months from date of receipt.



Host: Rabbit,
Target: ATP11B,
Positive c...



WB Suggested
Anti-ATP11B
Antibody
Titrat...