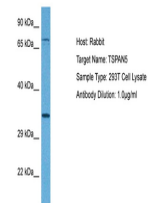


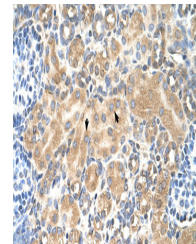
Product Datasheet

TSPAN5 antibody (orb579834)

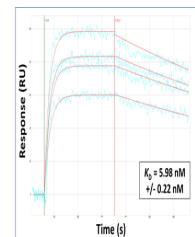
Description	Rabbit polyclonal antibody to TSPAN5
Species/Host	Rabbit
Reactivity	Human
Conjugation	Unconjugated
Tested Applications	IHC, WB
Immunogen	The immunogen is a synthetic peptide directed towards the middle region of human TSPAN5
Target	TSPAN5
Preservatives	Lyophilized from 1x PBS buffer with 0.09% (w/v) sodium azide and 2% sucrose.
Form/Appearance	Lyophilized from 1x PBS buffer with 0.09% (w/v) sodium azide and 2% sucrose.
Concentration	0.5 mg/ml
Storage	Maintain refrigerated at 2-8°C for up to 2 weeks. For long term storage store at -20°C in small aliquots to prevent freeze-thaw cycles.
Note	For research use only
Protein Sequence	Synthetic peptide located within the following region: ASRERCGVVPFSCCTKDPAEDVINTQCGYDARQKPEVDQQIYITKGCVPQ
Clonality	Polyclonal
MW	30 kDa
Uniprot ID	P62079
NCBI	NP_005714
Expiration Date	12 months from date of receipt.



Host: Rabbit,
Target Name:
TSPAN5,
Sampl...



Human kidney



Surface
Plasmon
Resonance
Kinetic Charac...